

THE IOWAN



WINTER WONDERLAND

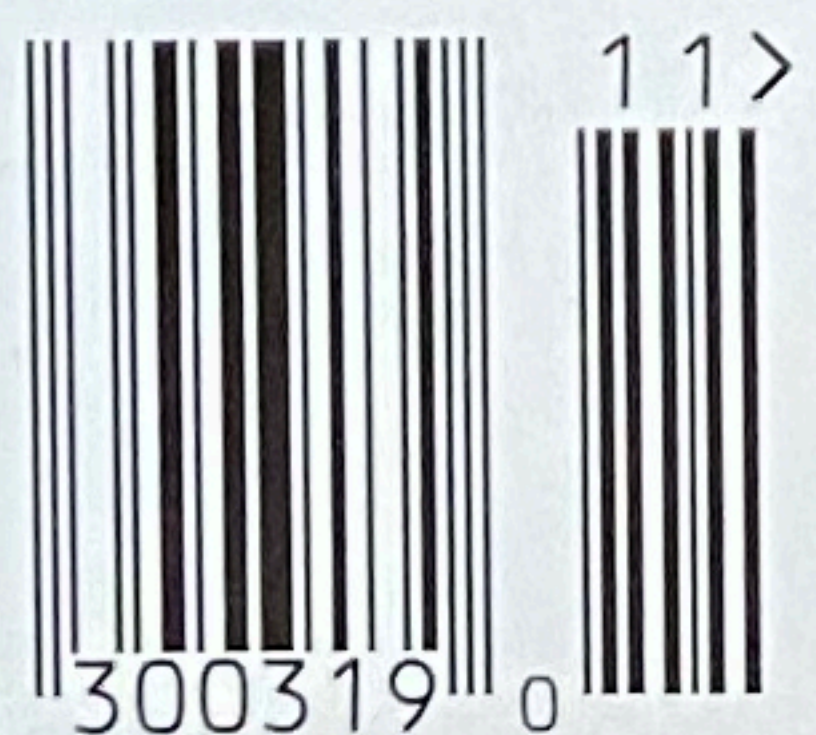
IMAGES OF IOWA'S
FROSTY LANDSCAPES

TRUE CRIME:
PODCASTERS
DIG INTO IOWA'S
CRIMINAL PAST

BRIDGING THE
MISSISSIPPI ON FOOT:
REPURPOSING THE
I-80 BRIDGE

MUSSELS: AN ESSAY
EXPLORES A VITAL
PART OF IOWA'S
ECOSYSTEM

NOV/DEC 2021 • \$4.95



DISPLAY UNTIL 01/15/22

iowan.com

36

THE WONDERS OF AN IOWA WINTER

Frost-covered trees create a scenic vista west of Marshalltown. (Photo by Brian Abeling)



THE IOWAN

November/December 2021
volume 70 | number 2
iowan.com

features

- 10 HERE TO STAY**
Preservation Iowa, a nonprofit group, has revealed its annual awards for historic preservation projects around the state.
- 14 SOMETHING TO TALK ABOUT**
by Grace Culbertson
Twenty-somethings created a podcast that's the lovechild of a true-crime friendship and Iowa roots.
- 20 SIGNS OF THE TIMES**
by John Margolies and Erich Gaukel
Though many still stand, the big, neon-lit motel signs on the sides of Iowa highways are relics of the past.
- 28 IOWA RADIO HOMEMAKERS**
by James Augustus Baggett
Innovative homemakers from southwest Iowa revolutionized women's roles far beyond the kitchen.
- 36 THE WONDERS OF AN IOWA WINTER**
by Brian Abeling
Frost and snow give the Iowa landscape a fresh look, beckoning us to get out and enjoy the winter.
- 46 CROSSING THE MISSISSIPPI**
by Avery Gregurich
A Quad Cities group wants to repurpose the I-80 bridge as a pedestrian and wildlife passageway.
- 50 IOWA ESSAY: MUSSELS**
by Keygan Sands
Mussels are key to a healthy ecosystem, but these fascinating creatures face many dangers.

departments

- 4** around Iowa & points of interest
5 from the editor
6 calendar
56 Iowa view (new for this issue!)

ON THE COVER

Holiday lights help create a festive winter scene at the Iowa State Capitol building in Des Moines. (Photo by Brian Abeling)

THE WONDERS OF AN IOWA WINTER

Photography by Brian Abeling

As much as we defend ourselves against winter with snowblowers, shovels, ice melt, snow tires, parkas, and snowboots, Iowa's cold season provides a refreshing perspective on places and things we tend to appreciate more during the warmer months. With fewer people out and about and (ideally) a touch of snow or frost to highlight the scene, winter can be a surprisingly good time to visit conservation areas, parks, town and city centers, and scenic byways. For those days when the weather doesn't cooperate for outdoor excursions (or even making it out to the mailbox), keep this issue handy so you can enjoy this curated collection of winter photography by Brian Abeling, who spends his weekends—in all types of weather—traversing the state to explore and photograph our state's hidden gems.



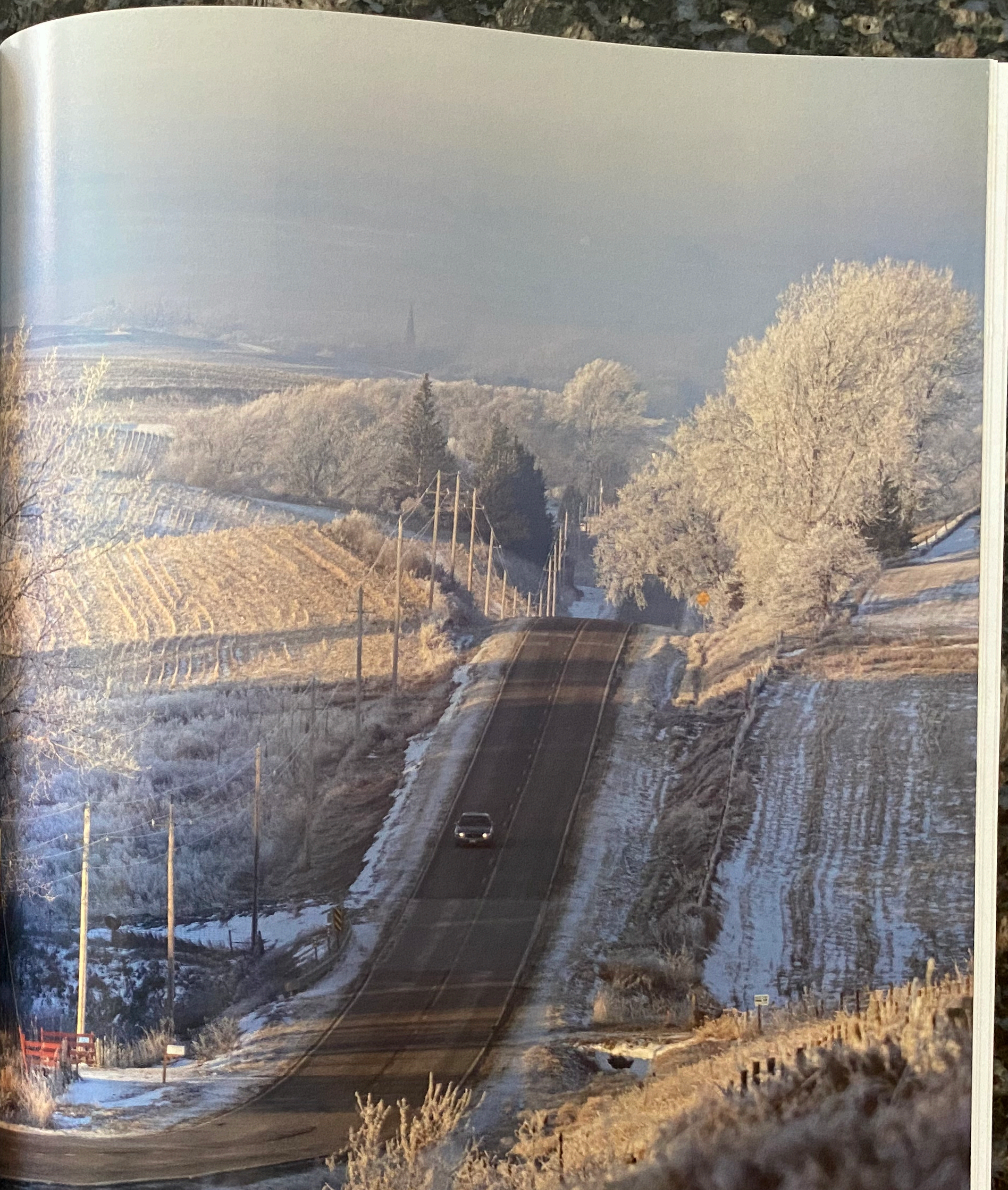
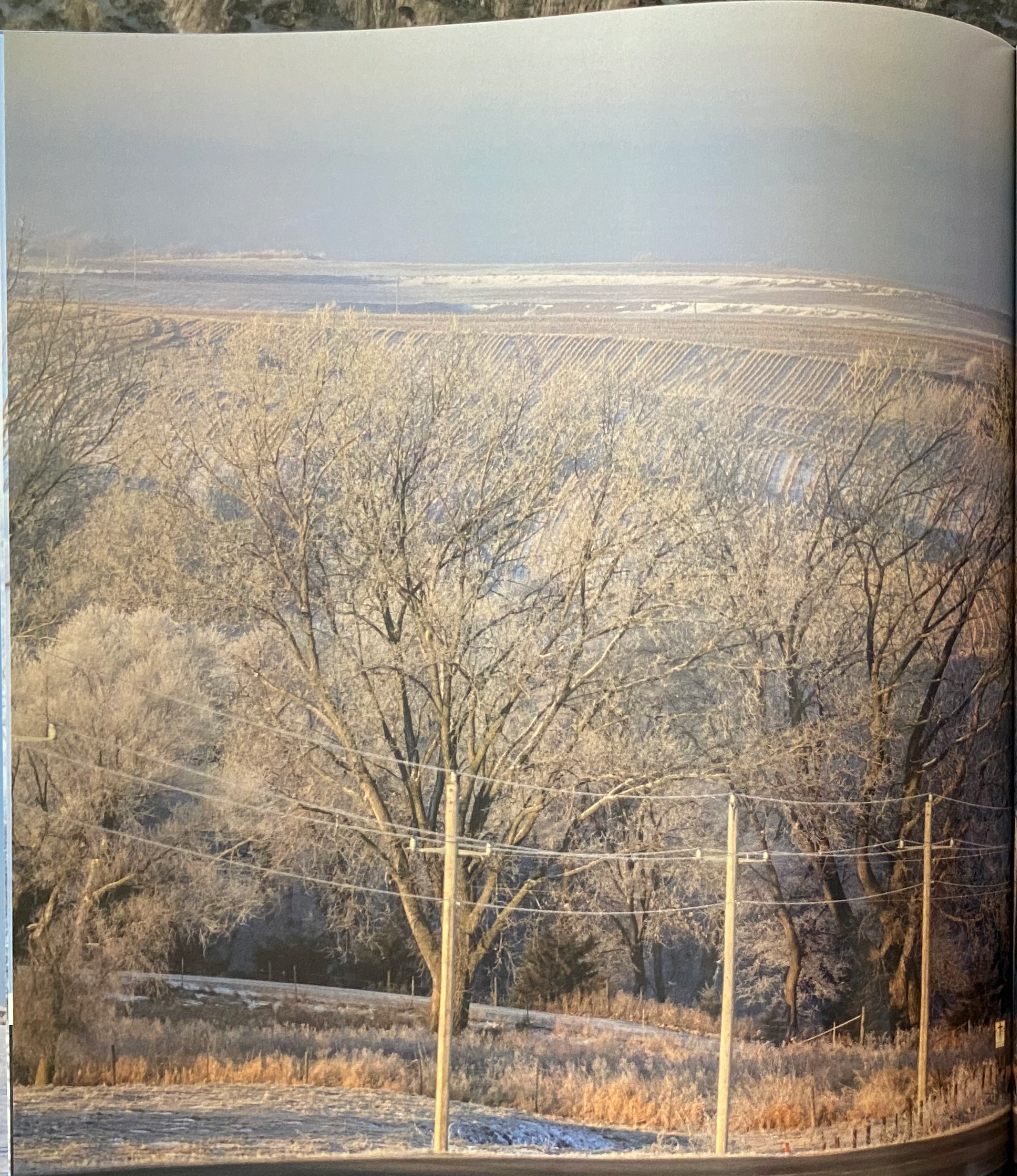
Thick morning frost coats the trees on a farmstead just east of Marshalltown.



Snow begins to blanket the Sioux County Courthouse and grounds in Orange City.



Clockwise from top left: The top of this weathered corn crib is visible behind a snow drift near Pilot Mound; Holiday lights decorate the windmill and information center located in Pella's Central Park; A bald eagle carries a fish near the Iowa Women of Achievement Bridge that spans the Des Moines River in downtown Des Moines; Holiday lights adorn storefronts in Pella; Also in Pella, snowfall collects on the window sill of the windmill at Sunken Gardens Park.



Traveling west toward Mapleton in the Loess Hills of Monona County, morning frost and sunshine combine to highlight this scenic view on County Highway E16.



West of Marshalltown, this stand of trees suffered damage during the derecho storm of 2020. The frost conceals many of the broken limbs still hanging on.



Also west of Marshalltown, this observation tower at the Grimes Farm and Conservation Center provides dramatic views of cropland, prairie, and wooded areas.